



HOOK

PIPE ACCESSORY

BASIC INFO

Number of Connections:

One

Number of Set Screws:

One

Finishes Available:

Black & Galvanized

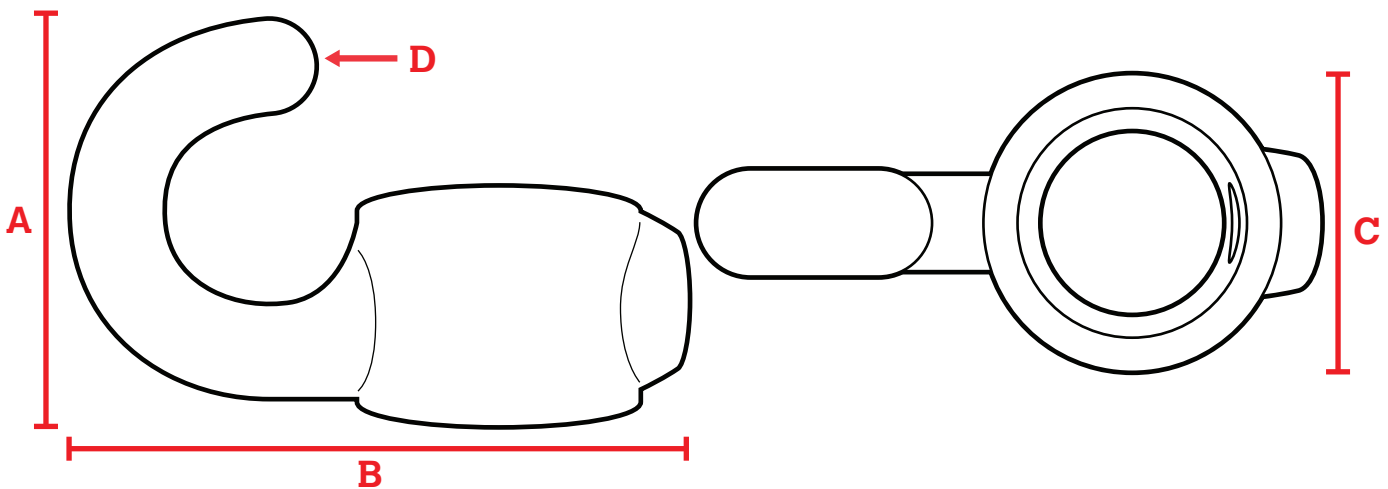
Piece Allow Movement:

No

The Hook is a fitting to help give your project extra potential. This fitting is a hoop that allows a pipe to run through it and the hook to let you hang decorative knick-knacks from your project.

FEATURES:

- Hot-dipped galvanized or black electrophoretic coating for corrosion resistance
- Iron construction for durable performance
- Easy installation and removal, no permanent connections
- No special tools needed
- Use an Allen Wrench for connections
- Able to operate in temperatures ranging from -20°C to 300°C



| Part # | Finish | Sizing | Set Screw (in x mm) | A (Total Height) | B (Total Width) | C (Depth) | D Hook Strength (lbs) | Fits Pipe OD (in) | Weight (lbs) |
|-----------|------------|---------|---------------------|------------------|-----------------|-----------|-----------------------|-------------------|--------------|
| 678-202HC | Galvanized | 3/8in | 1/8 x 10 | 1.51 | 2.34 | 0.99 | 224 | 0.68 | 0.17 |
| 678-204HC | Galvanized | 3/4in | 1/4 x 12.5 | 1.97 | 3.18 | 1.50 | 674 | 1.050 | 0.35 |
| 678-206HC | Galvanized | 1-1/4in | 3/8 x 12.7 | 1.97 | 3.73 | 2.17 | 674 | 1.660 | 0.46 |
| 688-202HC | Black | 3/8in | 1/8 x 10 | 1.51 | 2.34 | 0.99 | 224 | 0.68 | 0.17 |
| 688-204HC | Black | 3/4in | 1/4 x 12.5 | 1.97 | 3.18 | 1.50 | 674 | 1.050 | 0.35 |