



GROUND SOCKET

BASE SUPPORT

BASIC INFO

Number of Connections:

One

Number of Set Screws:

One

Finishes Available:

Black & Galvanized

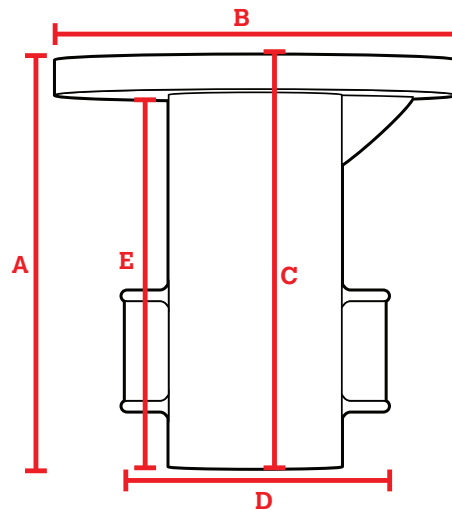
Piece Allow Movement:

No

The Ground Socket is used for a permanent ground connection and made to be buried in the ground or set in concrete for a secure base that won't move. If the Ground Socket is not in use, fill the pipe hole with a 1-1/4 Plug to cover the opening.

FEATURES:

- Hot-dipped galvanized coating for corrosion resistance
- Iron construction for durable performance
- Easy installation and removal, no permanent connections
- No special tools needed
- Use an Allen Wrench for connections
- Able to operate in temperatures ranging from -20°C to 300°C



PART #	SIZING	SET SCREW (in x mm)	A (Total Height)	B (Total Width)	C (Total Depth)	D (Total Bottom Width)	C (Insertion Depth)	FITS PIPE OD (in)	WEIGHT (lbs)
673-404HC	3/4in	1/4 x 12.5	4.13	4.13	3.96	2.2	3.96	1.050	1.57
673-406HC	1-1/4in	3/8 x 24	5.31	5.47	4.92	3.5	4.92	1.660	5.43