



# CROSS OVER

## MIDDLE/END SUPPORT

### BASIC INFO

**Number of Connections:**

Two

**Number of Set Screws:**

Two

**Finishes Available:**

Black & Galvanized

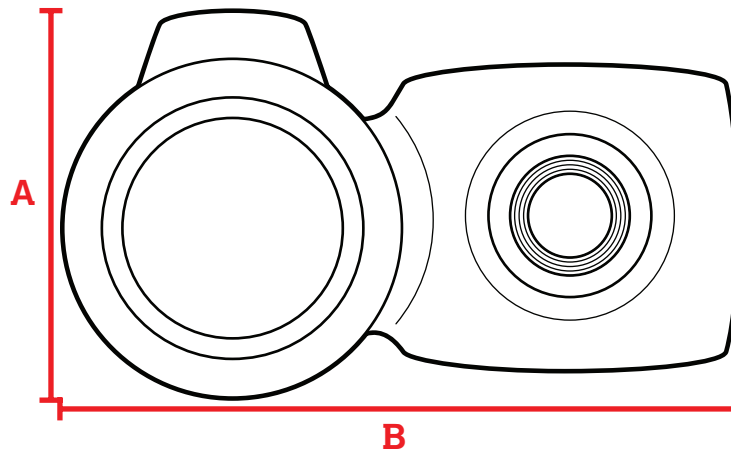
**Piece Allow Movement:**

No

The Cross Over fitting allows for two pipes running perpendicular to each other to cross by each other and be secured together. This fitting is not made to secure pipe ends together but lets pipes continue running to where they need to go and each is secured by one screw. Both screws are included with the fittings.

### FEATURES:

- Hot-dipped galvanized or black electrophoretic coating for corrosion resistance
- Iron construction for durable performance
- Easy installation and removal, no permanent connections
- No special tools needed
- Use an Allen Wrench for connections
- Able to operate in temperatures ranging from -20°C to 300°C



Part #	Finish	Sizing	Set Screw (in x mm)	A (Total Height)	B (Total Width)	Fits Pipe OD (in)	Weight (lbs)
676-104HC	Galvanized	3/4in	1/4 x 12.5	4.45	1.67	1.050	0.44
676-106HC	Galvanized	1-1/4in	3/8 x 12.7	4.13	2.33	1.660	1.02
686-104HC	Black	3/4in	1/4 x 12.5	4.45	1.67	1.050	0.44