



DOUBLE TAB OFFSET FLANGE

DESCRIPTION:

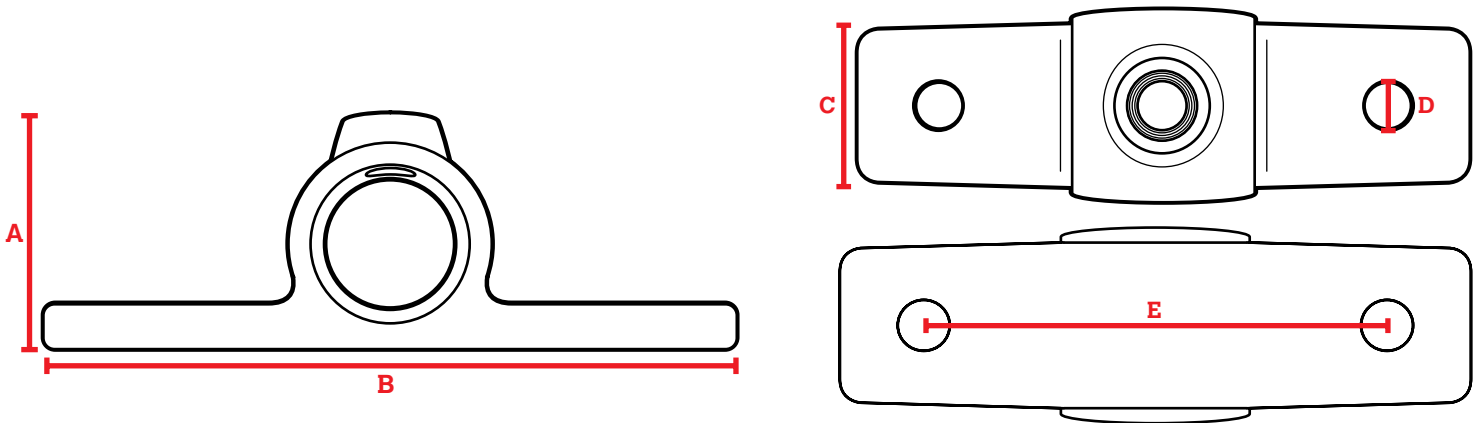
Double Tab Offset Flanges let you secure a surface to your pipe projects. This flange slides over a pipe with flat tabs allowing for a solid surface, like wood, to be placed over the pipe and the tabs have two pre-drilled holes to secure the fitting to the surface. The single screw is included with this fitting.

679-802HC | 3/8in
 679-804HC | 3/4in
 679-806HC | 1-1/4in
 689-802HC | 3/8in
 689-804HC | 3/4in

FEATURES:

- Hot-Dipped Galvanized or Black Electroplated coating for corrosion resistance
- Iron construction for durable performance
- Easy installation and removal, no permanent connections
- No special tools needed
- Use an Allen Wrench for connections
- Able to operate in temperatures ranging from -20°C to 300°C

DIMENSIONAL DATA:



PART #	FINISH	SIZING	INSTALLATION SCREW (IN X MM)	A (Total Height)	B (Total Width)	C (Base Length)	D (Screw Hole Diameter)	E	FITS PIPE OD (IN)	WEIGHT (LBS)
679-802HC	Galvanized	3/8in	1/8 x 10	1.26	2.59	0.75	0.32	1.81	0.68	0.16
679-804HC	Galvanized	3/4in	1/4 x 12.5	1.69	5.04	1.38	0.39	2.63	1.050	0.67
679-806HC	Galvanized	1-1/4in	3/8 x 12.7	2.33	5.12	1.30	0.39	3.87	1.660	0.81
689-802HC	Black	3/8in	1/8 x 10	1.26	2.59	0.75	0.32	1.81	0.68	0.16
689-804HC	Black	3/4in	1/4 x 12.5	1.69	5.04	1.38	0.39	2.63	1.050	0.67

CERTIFICATIONS & SAFETY:

- Materials meets ASTM A-197 Standard
- Not for Plumbing Applications
- Not for Scaffolding Applications
- Made to fit with SteelTek Pipe

California Prop 65 Warning:

This product contains chemicals including lead known to the State of California to cause cancer and birth defects or other reproductive harm. Wash hands after use.