



90° CROSS OVER

DESCRIPTION:

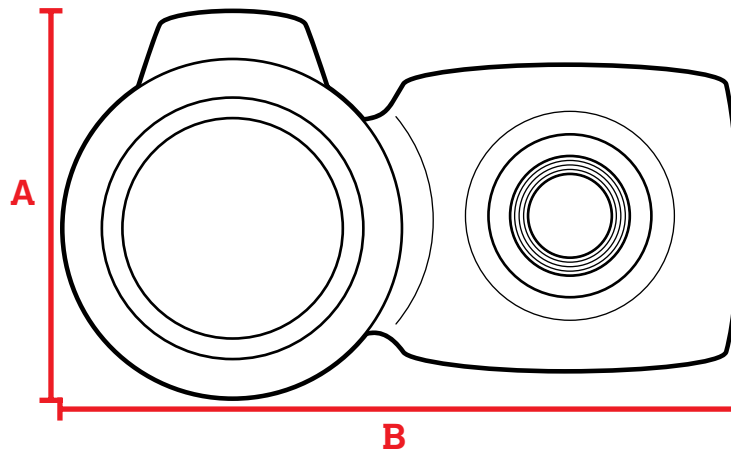
The Cross Over fitting allows for two pipes running perpendicular to each other to cross by each other and be secured together. This fitting is not made to secure pipe ends together but lets pipes continue running to where they need to go and each is secured by one screw. Both screws are included with the fittings.

676-104HC | 3/4in
676-106HC | 1-1/4in
686-104HC | 3/4in

FEATURES:

- Hot-Dipped Galvanized or Black Electroplated coating for corrosion resistance
- Iron construction for durable performance
- Easy installation and removal, no permanent connections
- No special tools needed
- Use an Allen Wrench for connections
- Able to operate in temperatures ranging from -20°C to 300°C

DIMENSIONAL DATA:



| PART # | FINISH | SIZING | INSTALLATION SCREW (IN X MM) | A (Total Height) | B (Total Width) | FITS PIPE OD (IN) | WEIGHT (LBS) |
|-----------|------------|---------|------------------------------|------------------|-----------------|-------------------|--------------|
| 676-104HC | Galvanized | 3/4in | 1/4 x 12.5 | 4.45 | 1.67 | 1.050 | 0.44 |
| 676-106HC | Galvanized | 1-1/4in | 3/8 x 12.7 | 4.13 | 2.33 | 1.660 | 1.02 |
| 686-104HC | Black | 3/4in | 1/4 x 12.5 | 4.45 | 1.67 | 1.050 | 0.44 |

CERTIFICATIONS & SAFETY:

- Materials meets ASTM A-197 Standard
- Not for Plumbing Applications
- Not for Scaffolding Applications
- Made to fit with SteelTek Pipe

California Prop 65 Warning:

This product contains chemicals including lead known to the State of California to cause cancer and birth defects or other reproductive harm. Wash hands after use.